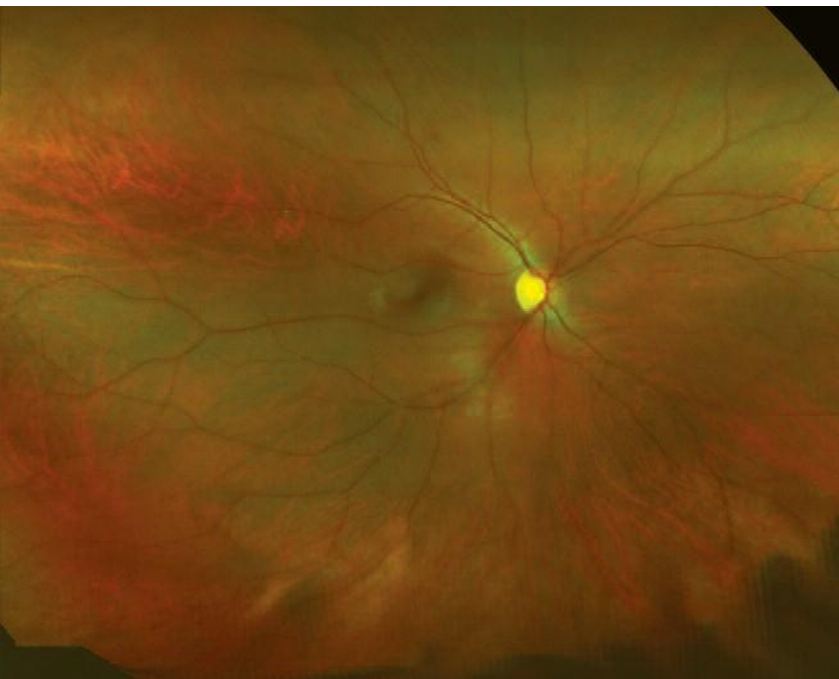
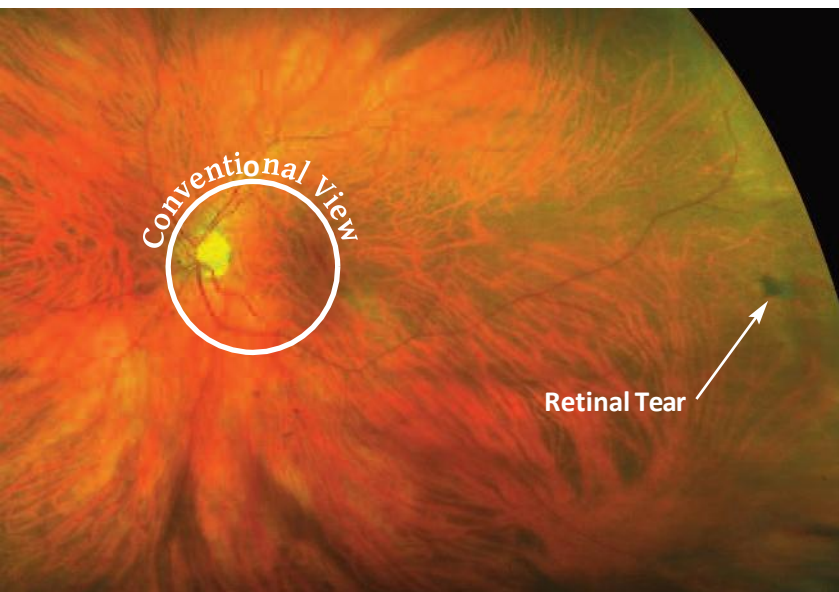


Helping you maintain healthy eyes

Check and maintain the health of your eyes with our new advanced method.



An **optomap** image of a healthy retina



An **optomap** image of a retinal tear

Dr. Kramer recommends the **optomap**® Retinal Exam as an integral part of your eye exam. An **optomap** provides him with a view of approximately 82% of your retina in a single capture and helps Dr. Kramer evaluate your visual health.

Many eye problems can develop without warning and progress with no symptoms. Early on, you might not even notice any change in your vision. However, diseases such as macular degeneration, glaucoma, retinal tears or detachments, as well as other health problems such as diabetes and high blood pressure can be detected with a thorough exam of the retina.

An **optomap**® Retinal Exam provides:

- A scan to confirm a healthy eye or, to detect the presence of disease.
- An overview or map of the retina, giving Dr. Kramer a more detailed view than can be achieved by other means.
- The opportunity for you to view and discuss the **optomap** images of your eye with Dr. Kramer at the time of your exam.
- A permanent record for your medical file, enabling Dr. Kramer to make important comparisons if potential problems show themselves at a future examination.

The **optomap** Retinal Exam is fast, easy, and comfortable.

PLEASE NOTE: Dr. Kramer strongly believes an **optomap** is an essential part of your comprehensive eye exam. However, some health plans do not cover the **optomap** Retinal Exam, which means that you may be responsible for an additional fee.



Optos, Inc.
67 Forest Street
Marlborough, MA 01752
USA

800-854-3039


ultra-wide digital retinal imaging